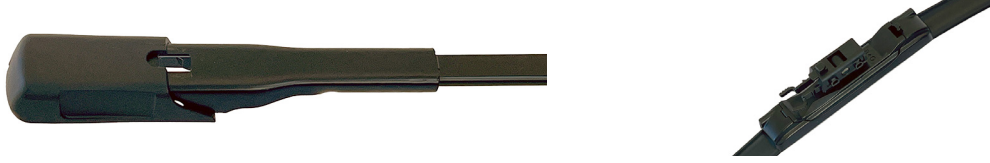




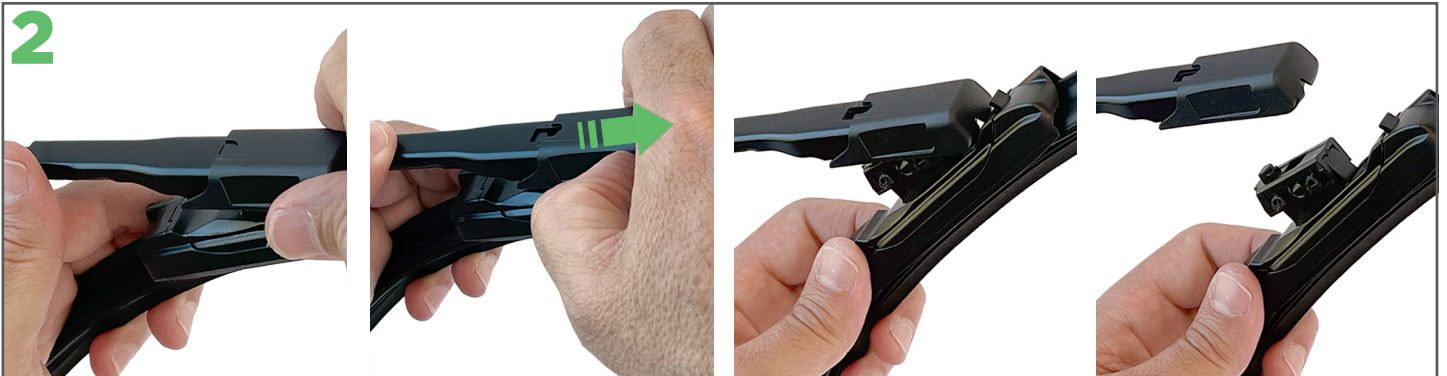
INSTALLATION INSTRUCTIONS



MERCEDES OEM FRONT WIPER BLADE



1
To remove the current wiper, rotate the blade away from the arm as far as it will go.

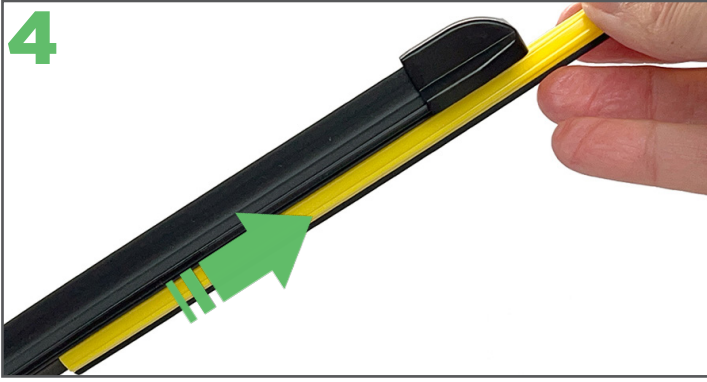


2
Hold the arm in position then slide the plastic cap forward into the unlock position to release the blade from the arm (you may need to press locking tabs).



3
Next, remove the new Ezywiper blade from its packaging.

To fit the Ezywiper blade, place the blade into the arm then slide the plastic cap to lock the wiper into place.



4 Remove the protective sleeve from the Ezywiper blade then place the arm back on the windscreen.



5 Check the low spoiler side of the blade faces the bottom of your windscreen.



For installation videos and more info see ezywiper.co.nz