



INSTALLATION INSTRUCTIONS



ROC LOCK 2 REAR WIPER BLADE

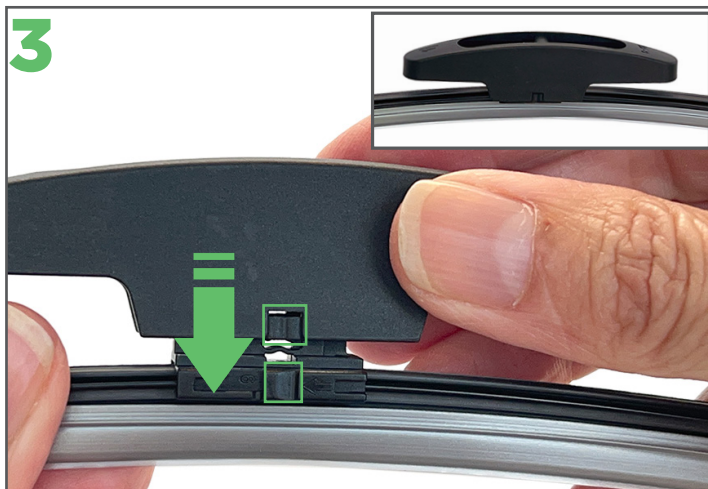
STEP 1: PREPARE THE EZYWIPER BLADE



Remove the new Ezywiper blade from its packaging. Your car's wiper arm needs a different adaptor than the one on the Ezywiper blade. To remove the adaptor, locate the arrow at the top of the adaptor, then gently push in the opposite direction until the adaptor disengages (see the inset for what the wiper looks like once the adaptor is removed).



Select the S-11 adaptor from the bag of adaptors supplied with the blade.



Check the arrows on the blade mount and adaptor are pointing in the same direction. The bottom of the adaptor has notches. These need to line up with the indent directly in front of the arrow on the blade mount. Gently push the adaptor down so it clips onto the blade mount (see inset).



Slide the adaptor in the direction of its arrow until it locks into place.

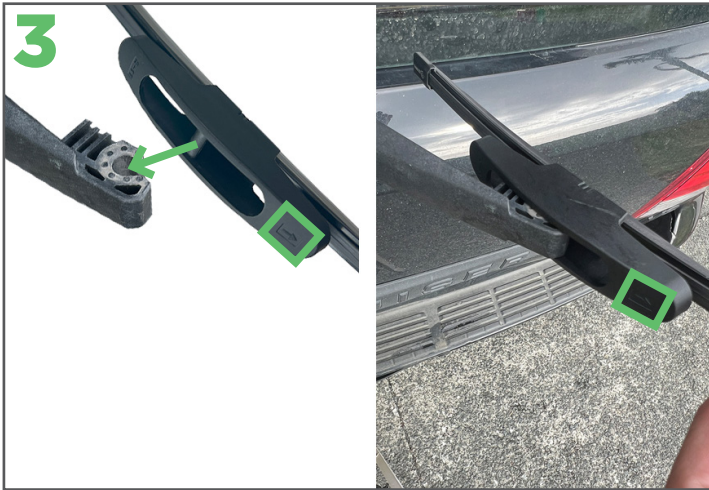
STEP 2: FIT THE EZYWIPER BLADE



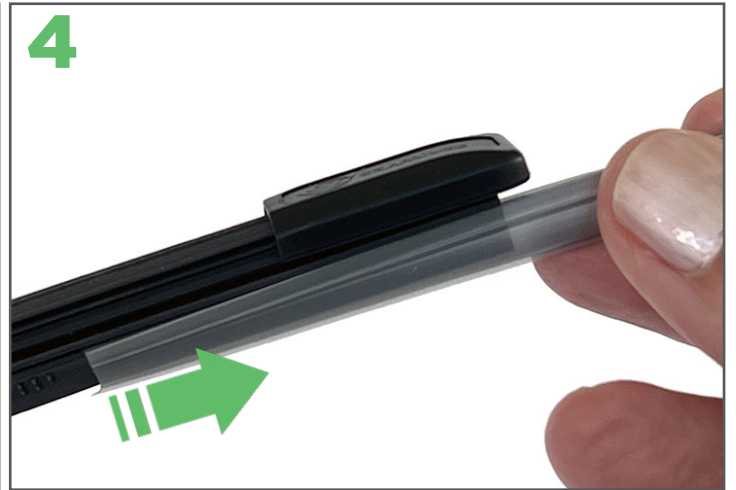
Lift the car's rear wiper arm off the rear screen as far as it will go.



Slowly rotate the wiper while pulling it away from the arm until it disengages.



To fit the new Ezywiper blade, align the centre of the adaptor's cross pin into the space on the arm. Make sure the adaptor's arrow is pointing outwards from the arm.



Remove the protective sleeve from the Ezywiper blade.



Rotate the blade and place the wiper back on the windscreen.

Check the adaptor's arrow is pointing outwards from the arm so that the blade is secure.



For installation videos and more info see ezywiper.co.nz