

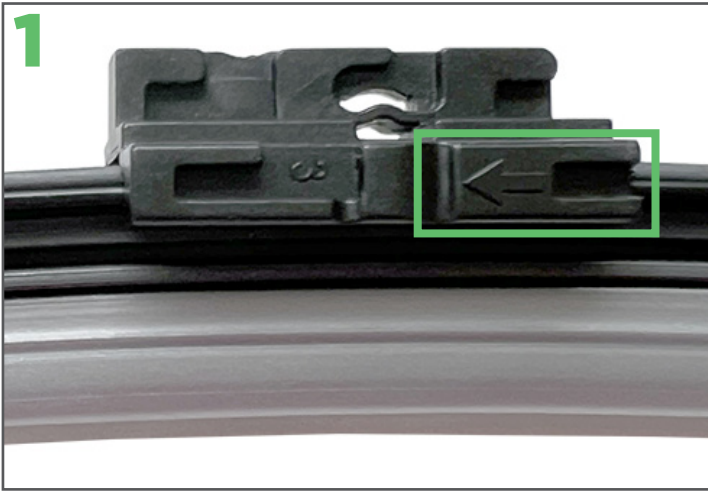


INSTALLATION INSTRUCTIONS

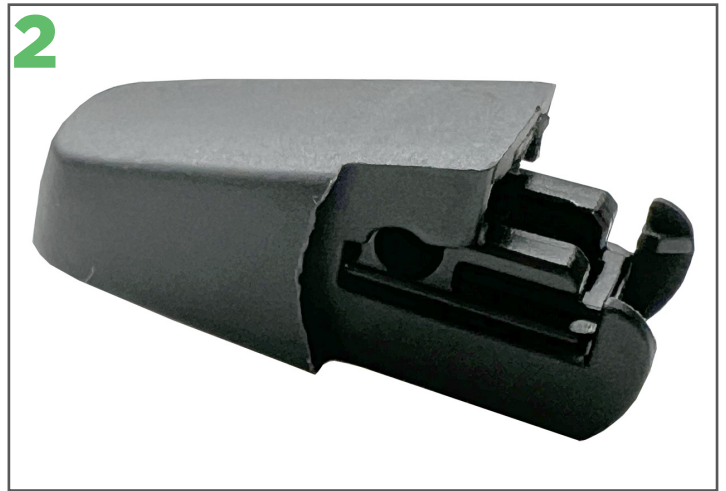


V-NOTCH REAR WIPER BLADE

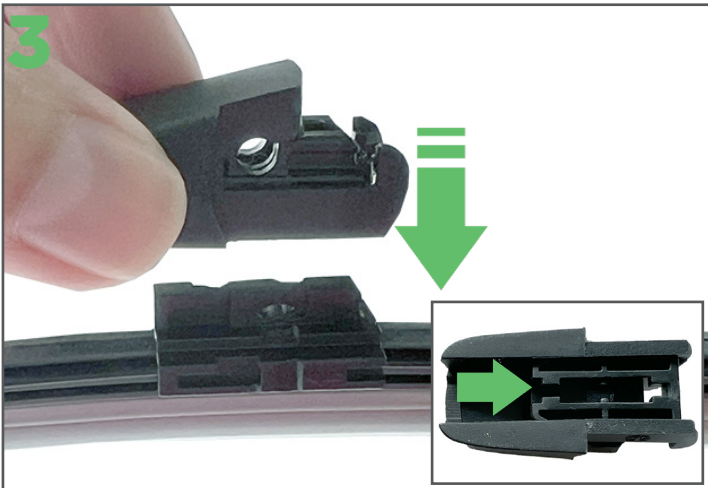
PART 1: PREPARE THE EZYWIPER BLADE



1. Remove your new Ezywiper blade from the packaging. Locate the arrow on the blade mount.



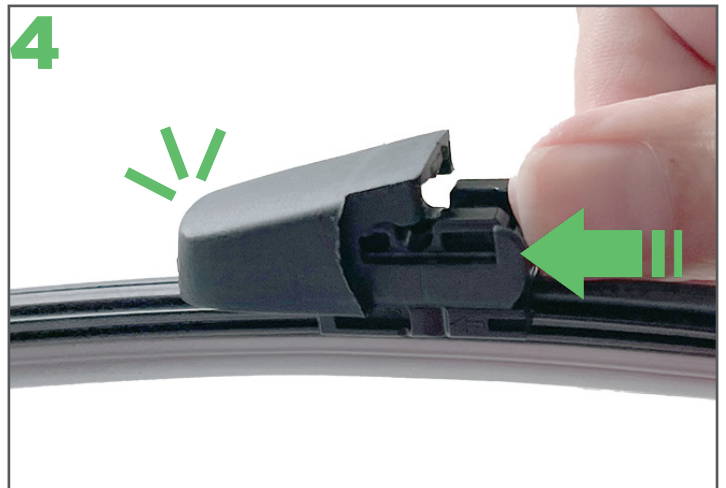
2. Select the S2 adaptor from the bag of adaptors supplied with your blade.



3. Retrieve the new wiper blade and position it so you can see the arrow pointing left (as in picture 1).

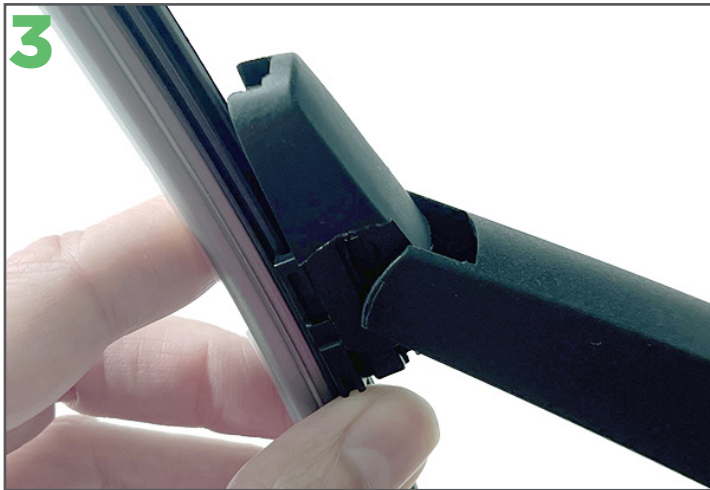
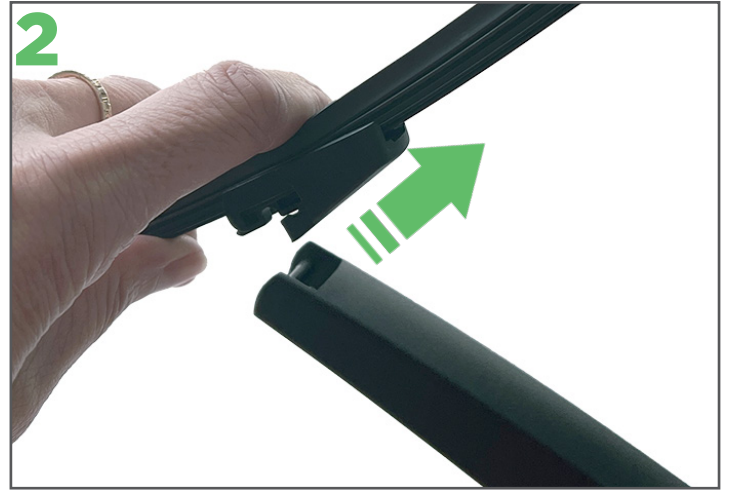
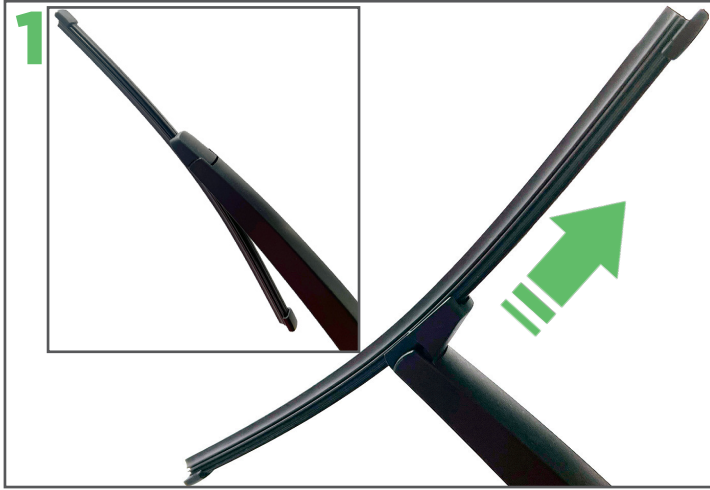
The bottom of the adaptor has a slot that fits over the mount on the blade (see inset).

Line the adaptor up with the mount. Gently fit the adaptor onto the blade.



4. Slide the adaptor in the direction of the arrow on the mount until the adaptor clicks into place.

PART 2: FIT THE EZYWIPER BLADE



5. Don't forget to remove the protective sleeve from the new blade before placing the arm back on the rear screen.



For installation videos and more info see ezywiper.co.nz