



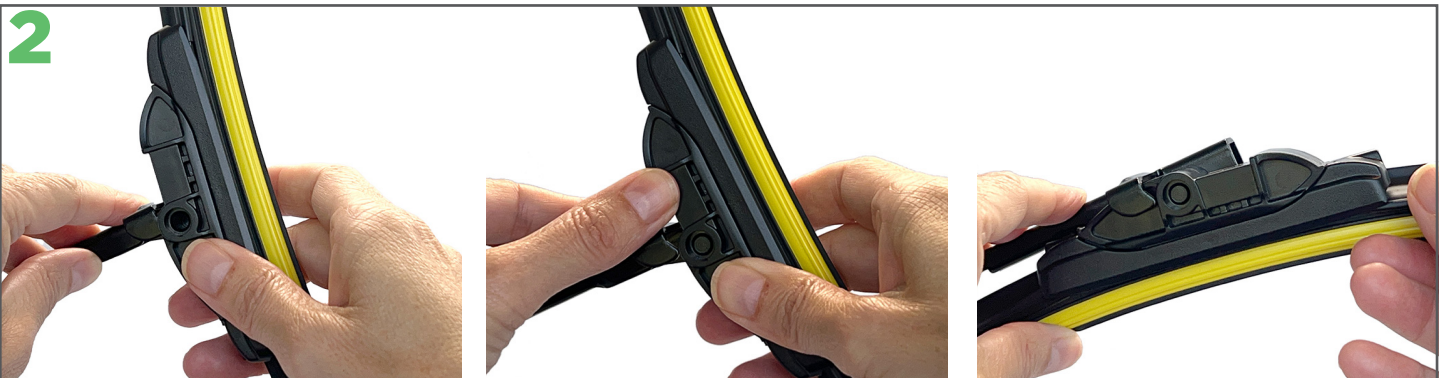
## INSTALLATION INSTRUCTIONS



### SIDE PIN FRONT WIPER BLADE

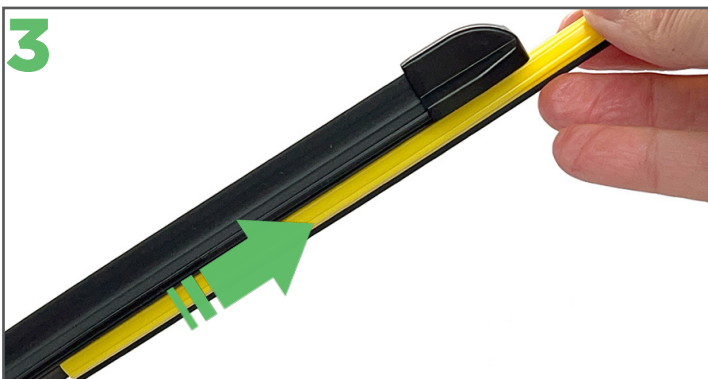


To remove the current wiper, rotate it to 90° then slide the wiper off the arm.



Next, remove the new Ezywiper blade from its packaging.

To install the Ezywiper blade, hold the wiper at 90° and slide the hole into the pin on the arm. Rotate the blade into position.



Remove the protective sleeve from the Ezywiper blade then place the arm back on the windscreen.



Check the low spoiler side of the blade faces the bottom of your windscreen.

For installation videos and more info see [ezywiper.co.nz](http://ezywiper.co.nz)