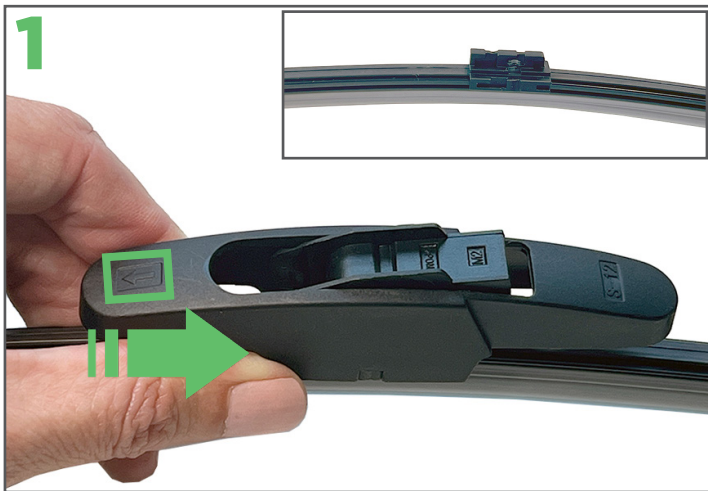




INSTALLATION INSTRUCTIONS



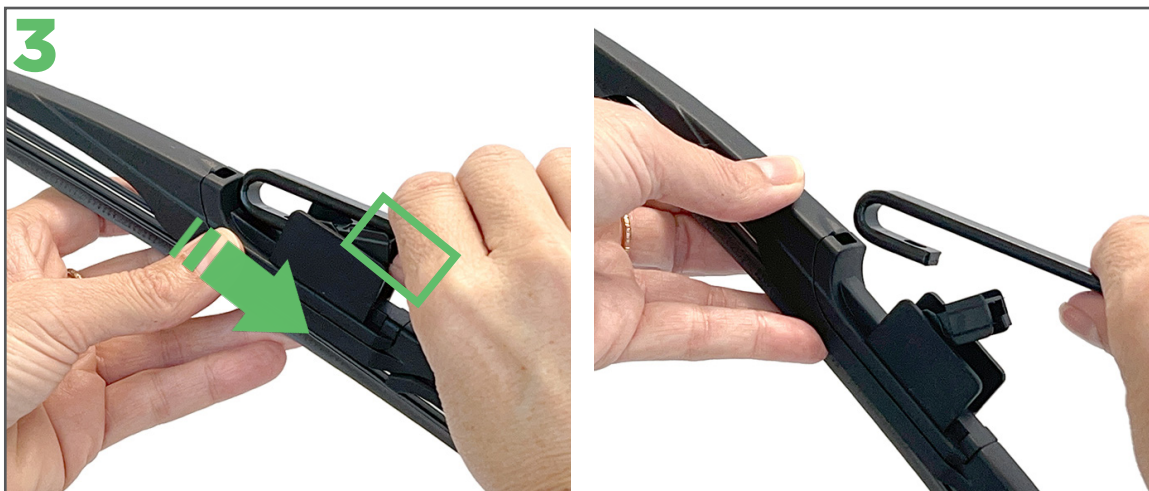
HOOK REAR WIPER BLADE



1
Take the new Ezywiper blade from its packaging. Remove the adaptor on the Ezywiper blade by first locating the arrow at the top of the adaptor, then gently pushing in the opposite direction until the adaptor disengages (see inset for what the wiper looks like once the adaptor is removed).

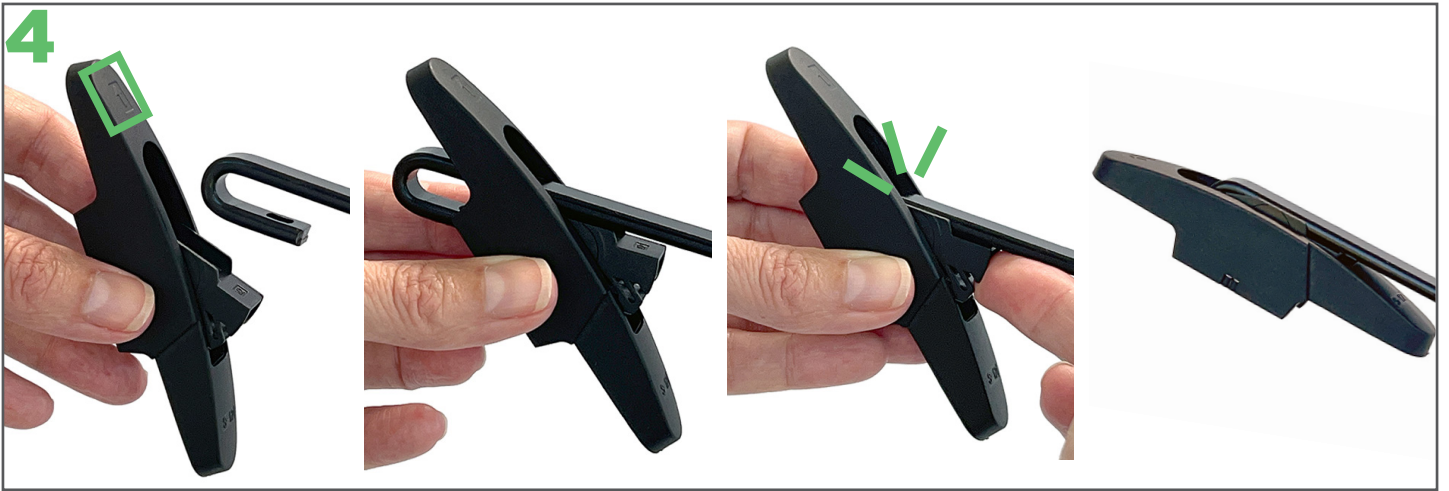


2
Lift the car's rear wiper arm off the rear screen.

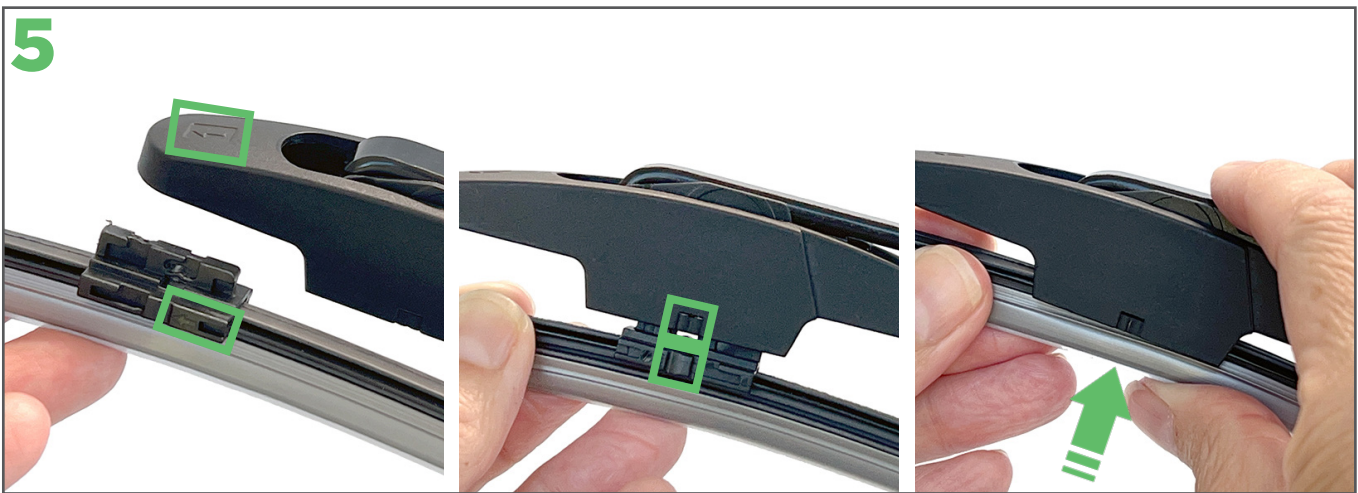


3
To remove the current wiper, push the tab and slide the wiper until it disengages from the arm.

Note: you may need to tilt the blade to 90° first, depending on your car's wiper arm.



Next, fit the Ezywiper adaptor onto the car's wiper arm. Have the arrow end of the adaptor at the front of the arm. Tilt the tabs inside the adaptor then fit the adaptor onto the arm. Gently slide the adaptor onto the arm so the adaptor locks into place.



To fit the Ezywiper blade, check the arrows on the blade mount and adaptor are pointing in the same direction.

The bottom of the adaptor has notches. These need to line up with the indent directly in front of the arrow on the blade mount.

Gently push the wiper blade up so it fits onto the adaptor.



Slide the blade back until it locks into place on the adaptor.



Don't forget to remove the protective sleeve from the Ezywiper blade before placing the arm back on the rear screen.



For installation videos and more info see ezywiper.co.nz