

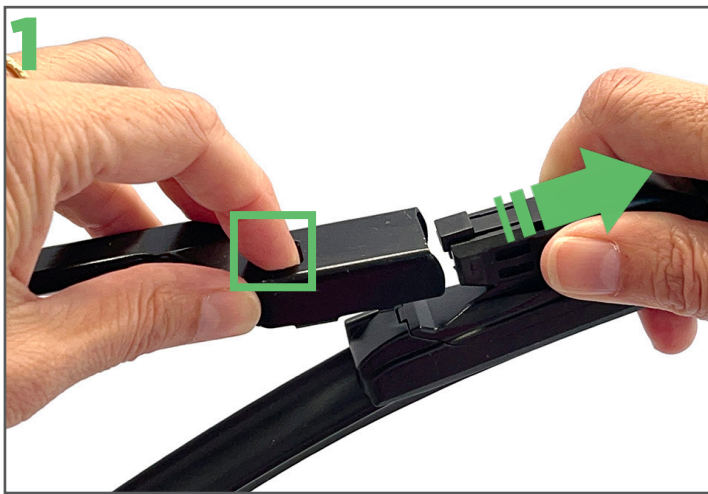


## INSTALLATION INSTRUCTIONS

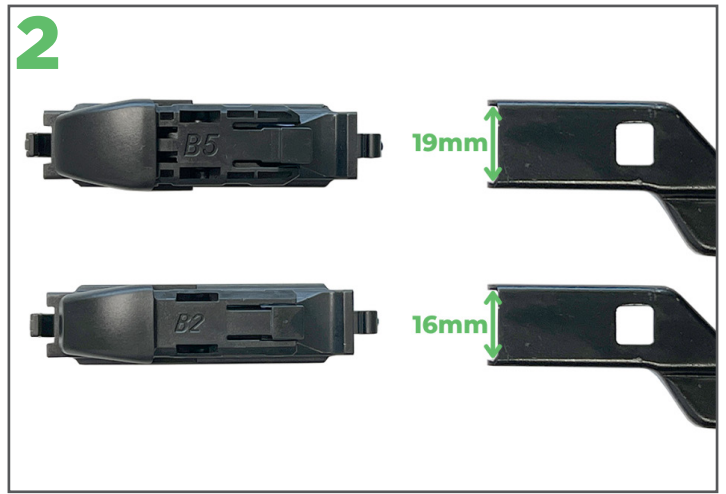


### PUSH BUTTON 1 FRONT WIPER BLADE

#### STEP 1: PREPARE THE EZYWIPER BLADE



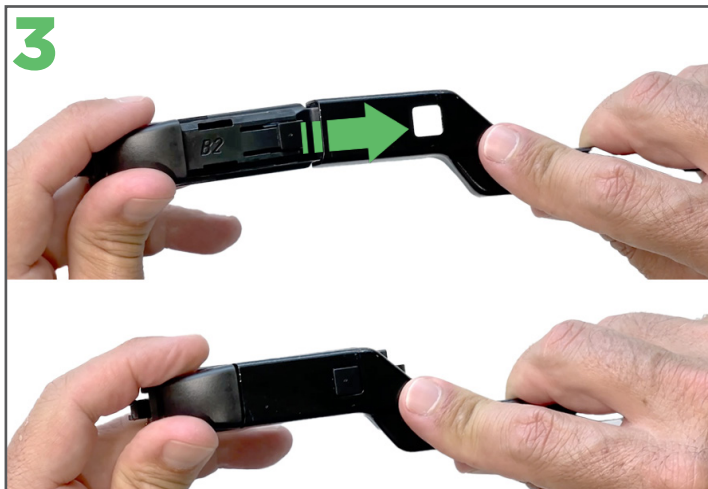
There are two common sizes of push button arm for your vehicle - either 16 millimetres or 19 millimetres wide. First we'll figure out what one your car has. Start by removing the current wiper blade by pushing the button down and sliding the blade away from the arm.



Next, take the B5 and B2 adaptors that were supplied with the Ezywiper blade.

The B5 adaptor is 19 millimetres wide and the B2 adaptor is 16 millimetres wide.

The B5 adaptor is the most common fit.



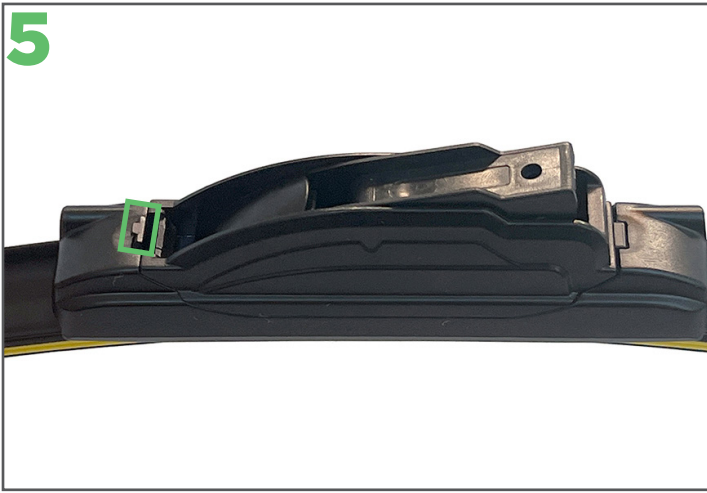
Measure the inside width of the wiper arm to determine the width, and therefore the adaptor you need.

Or, slide the B5 adaptor into the arm until it locks into place. If it is too wide then try the B2 adaptor instead.

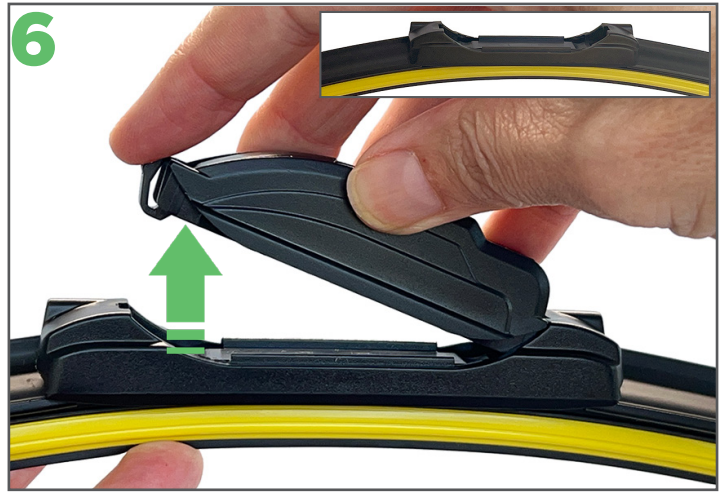
**The adaptor should fit snugly.** In this example the B2 adaptor is the right fit.



Once you've chosen your adaptor remove it from the arm so it can be fitted to the new Ezywiper blade.

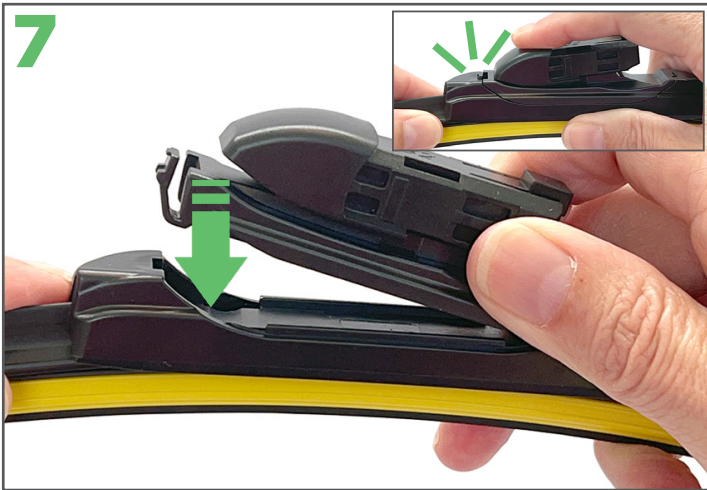


Now, remove the new Ezywiper blade from its packaging.  
To remove the current adaptor, locate the clip at the front of the adaptor.



Push the clip so the adaptor releases and can be removed (see the inset for what the wiper looks like once the adaptor is gone).

**TIP:** Your chosen adaptor needs to be fitted the same way round.

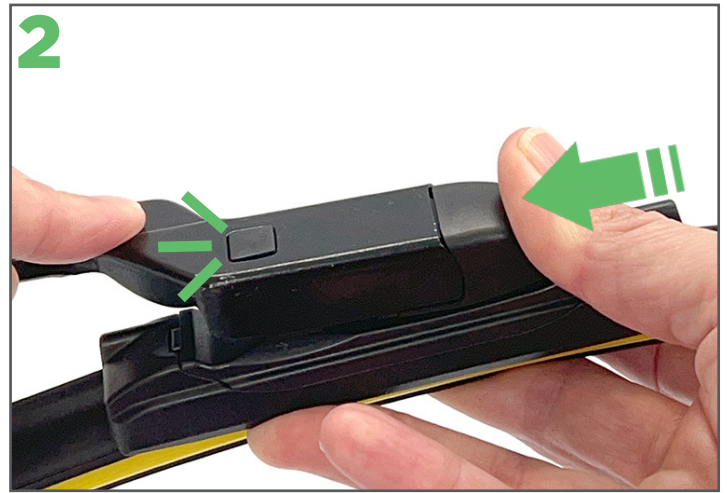


Take your chosen B5 or B2 adaptor and fit the back of it into the wiper mount then guide the front end in. It will click into place (see inset).

## STEP 2: FIT THE EZYWIPER BLADE



To fit the new Ezywiper blade, line the wiper blade up with the arm.



Firmly push the Ezywiper blade in until it locks into place.

**TIP:** Lift the wiper up so the button on top of the adaptor presses into the arm as the blade slides into place.



Don't forget to remove the protective sleeve from the Ezywiper blade before placing the arm back on the windscreen.



Check the low spoiler side of the blade faces the bottom of your windscreen.



For installation videos and more info see [ezywiper.co.nz](http://ezywiper.co.nz)