



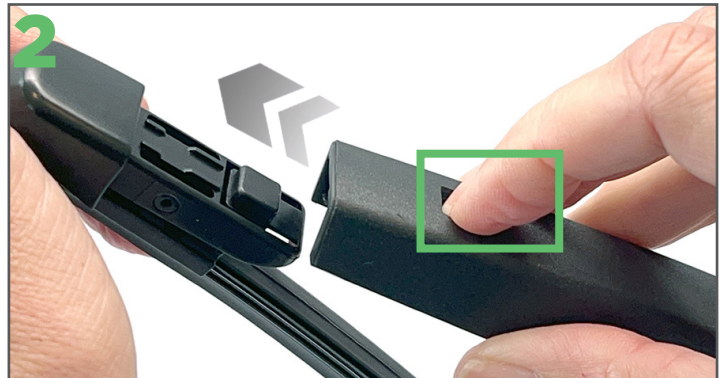
INSTALLATION INSTRUCTIONS



PUSH BUTTON REAR WIPER BLADE



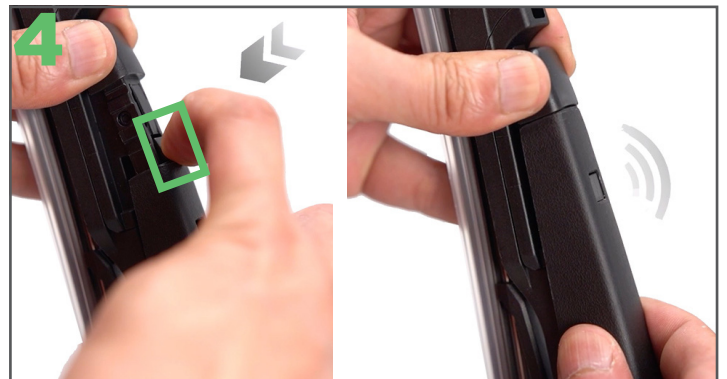
Lift the car's rear wiper arm off the rear screen as far as it will go.



To remove the current wiper blade push the button down and slide the blade away from the arm.



To fit the new Ezywiper blade, line the wiper blade up with the arm.



Push the button on the connector as you firmly slide the Ezywiper blade in until it locks into place.



Remove the protective sleeve from the Ezywiper blade before placing the arm back on the rear screen.

For installation videos and more info see ezywiper.co.nz