



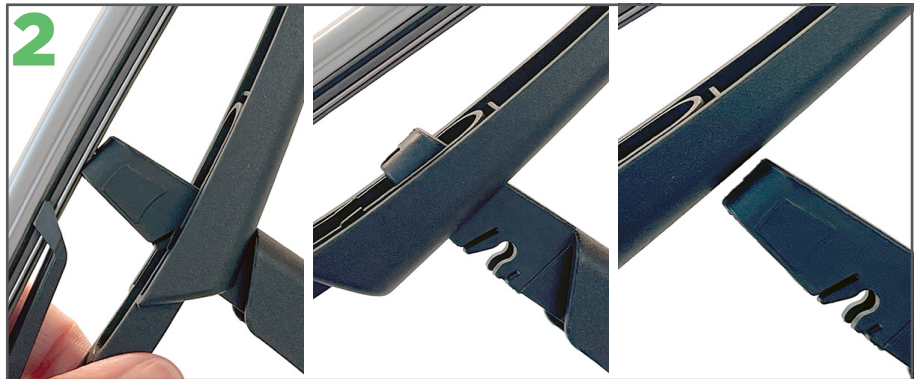
INSTALLATION INSTRUCTIONS



SNAP CLAW REAR WIPER BLADE



1 Lift the car's rear wiper arm off the rear screen as far as it will go.



2 To remove the current wiper blade gently rotate and pull the blade away from the arm until it disengages.



3 To fit the new Ezywiper blade, align the centre of the connector's cross pin with the hook on the arm.



4 Push the blade down and rotate it so the connector's cross pin fits into the hook on the arm.



5 Continue to rotate the blade until it locks into place on the arm.



6 Don't forget to remove the protective sleeve from the Ezywiper blade before placing the arm back on the rear screen.

For installation videos and more info see ezywiper.co.nz